



FILM DISTRIBUTORS LTD.

**The most exciting original
motion picture event of all time.**



EMI Accessories are available only from

NATIONAL SCREEN SERVICE LTD.

15 Wadsworth Road, Greenford, Middx., UB6 7JN. Telephone: 01-998 2851-8.

Telegrams: Nascreno, GREENFORD



Block No. KK1
Still No. KK101

A close-up of the face of the mighty King Kong. The Dino De Laurentiis production of KING KONG stars JESSICA LANGE and JEFF BRIDGES.



Block No. KK2
Still No. KK102

Dwan (JESSICA LANGE) poses in the hands of the mighty Kong. KING KONG is produced by Dino De Laurentiis.



Block No. KK3

Still No. KK103

Dwan (JESSICA LANGE) and Prescott (JEFF BRIDGES) cower in horror as they are confronted by King Kong in a scene from KING KONG.



Block No. KK4

Still No. KK104

The terrifying face of the 40 foot monster, KING KONG starring JESSICA LANGE and JEFF BRIDGES and produced by Dino De Laurentiis.



Block No. KK5

Still No. KK105

Breaking loose from his chains, King Kong goes on the rampage causing panic in the crowds who have come to see him in a scene from KING KONG, a Dino De Laurentiis production.

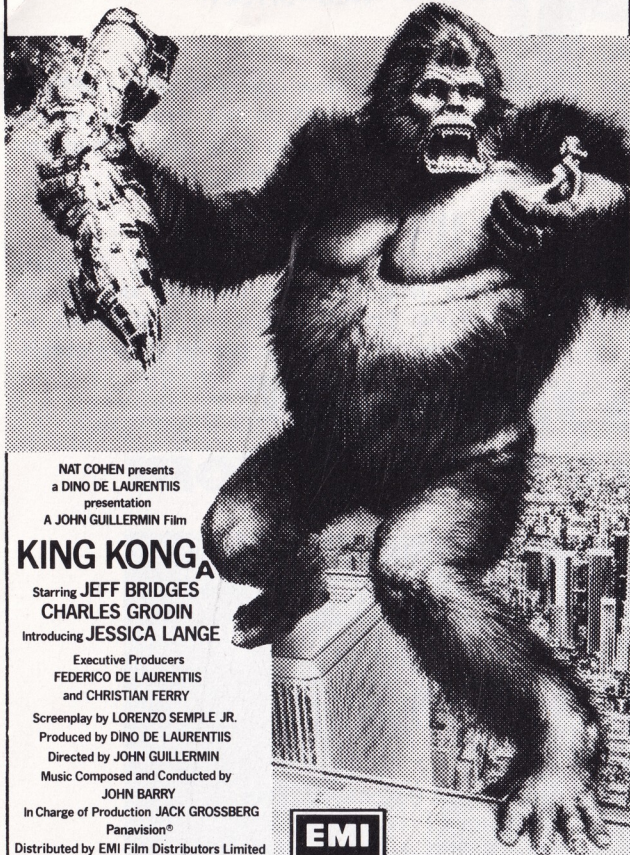


Block No. KK6

Still No. KK106

Dwan (JESSICA LANGE) knows there is no escape from the clutches of the mighty King Kong in a scene from KING KONG, produced by Dino De Laurentiis.

**The most exciting
original motion picture
event of all time.**



NAT COHEN presents
a DINO DE LAURENTIIS
presentation
A JOHN GUILLERMIN Film

KING KONG ^A

Starring **JEFF BRIDGES**
CHARLES GRODIN
Introducing **JESSICA LANGE**

Executive Producers
FEDERICO DE LAURENTIIS
and **CHRISTIAN FERRY**

Screenplay by **LORENZO SEMPLÉ JR.**
Produced by **DINO DE LAURENTIIS**
Directed by **JOHN GUILLERMIN**
Music Composed and Conducted by
JOHN BARRY

In Charge of Production **JACK GROSSBERG**
Panavision®
Distributed by EMI Film Distributors Limited

King Kong

6" D/C Hire Fee £1.90p

**The most exciting original
motion picture event of all time.**



NAT COHEN presents
a DINO DE LAURENTIIS
presentation
A JOHN GUILLERMIN Film

KING KONG ^A

Starring **JEFF BRIDGES**
CHARLES GRODIN
Introducing **JESSICA LANGE**

Executive Producers
FEDERICO DE LAURENTIIS
and **CHRISTIAN FERRY**

Screenplay by **LORENZO SEMPLÉ JR.**
Produced by **DINO DE LAURENTIIS**
Directed by **JOHN GUILLERMIN**
Music Composed and Conducted by **JOHN BARRY**

In Charge of Production **JACK GROSSBERG**
Panavision®
Distributed by EMI Film Distributors Limited

King Kong

4" D/C Hire Fee £1.55p



**The most
exciting original
motion picture
event of all time.**

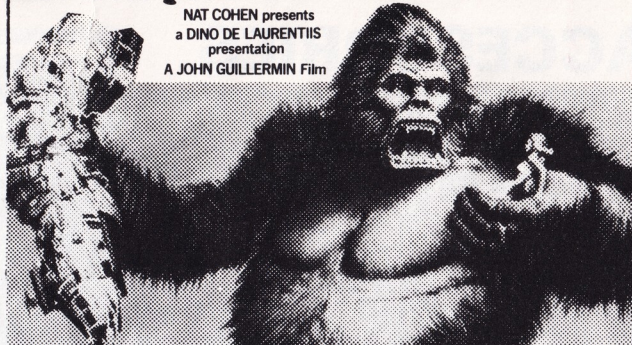
NAT COHEN presents
a DINO DE LAURENTIIS presentation
A JOHN GUILLERMIN Film

King Kong ^A

Panavision®
Distributed by EMI Film Distributors Limited

2" D/C Hire Fee £1.50p

**The most exciting original
motion picture event of all time.**



King Kong

EMI Panavision® Distributed by EMI Film Distributors Limited ^A

3" D/C Hire Fee £1.50p



1" D/C Hire Fee £1.50p

**The most
exciting original
motion picture
event of all time.**



NAT COHEN presents a DINO DE LAURENTIIS presentation
A JOHN GUILLERMIN Film

King Kong

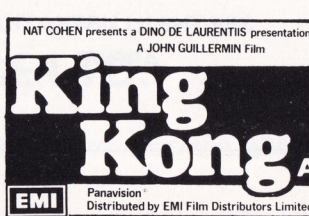
EMI Panavision® Distributed by EMI Film Distributors Limited ^A

3" S/C Hire Fee £1.50p

**The most
exciting original
motion picture
event of all time.**



2" S/C Hire Fee £1.50p



1" S/C Hire Fee £1.50p

ACCESSORIES



30" x 40" quad poster. Single feature quad poster as illustrated above is available from National Screen Service Ltd. Price 44p each.

A limited supply of lift bills (as illustrated on front page) size 22 1/4" x 16 1/4", are available, with a blank panel provided for overprinting theatre details, from N.S.S. Price 28p each.

10" x 8" Full Colour Stills on "KING KONG". Eight per set—Hire Fee £1.10p per set.

USE BLOW—UPS FOR TIE—UPS
Blow-up stills of the editorial blocks illustrated inside are available from N.S.S. in these sizes:

11" x 14"	48p	22" x 28"	£2.25p
20" x 16"	£1.28p	30" x 40"	£4.00p
20" x 30"	£2.15p	40" x 60"	£7.36p
40" x 72"	£7.82p		

TRAILERS: Please order your trailer direct from National Screen Service Ltd.

VAT: Value Added Tax will be charged extra if applicable.

FOR BILLING GUIDE
SEE THE ILLUSTRATION
ABOVE

IS YOUR LOCAL PAPER PRINTED
WEB—OFFSET?

Many newspapers now use the WEB—OFFSET method of printing and do not therefore require blocks. If your local press uses this method you can obtain the following for them.

ADVERTISING — A "pull" of the complete advertising range can be obtained on request from National Screen Service Ltd. EDITORIAL — stills, quoting reference number listed, are obtainable from the EMI Press Office.

YOUR LOCAL CONTACTS at the following addresses will be pleased to offer you every possible service.

SOUTHERN AREA
Salesmen

South Coast & Home Counties
G. Martin
EMI Film Distributors UK Division,
Film House,
142, Wardour Street,
London W1V 4AE

Midlands
J. Bairstow
Lynden Lea,
Newstead Abbey Park,
Linby,
Notts, NG15 8GD

Wales & West England
F. W. Sentinella
14, Mansfield Terrace,
Budleigh Salterton,
Devon EX9 6EN

NORTHERN AREA
Salesmen

Liverpool & Manchester
E. Davey
40, Frobisher Road,
Leasowe,
Moreton,
Wirral L46 2RD

Leeds/Newcastle
R. Vaux
44, Carr Manor Avenue,
Leeds 17

Scotland/Newcastle
R. Selby
25, Glamis Avenue,
Newton Mearns
Glasgow G77 5NZ,
Scotland

N. Ireland Representative
H. Stevenson
290, Upper Newtownards Road,
Belfast BT4 3EV.

**the
most
exciting
original
motion
picture
event
of all
time.**

THE STORY

In a competitive rush to explore every conceivable spot on Earth for hidden sources of oil, the Petrox Company has sent into Micronesia an expedition headed by Fred Wilson (Charles Grodin) and scientist Bagley (Rene Auberjonois) to investigate a report of rich underwater oil deposits off fog-shrouded Skull Island.

Before leaving port, Wilson's ship picks up a stowaway, Jack Prescott (Jeff Bridges). A Princeton University zoologist, he is drawn to Skull Island by ancient reports of a prehistoric monster living there.

On his discovery, Wilson is unimpressed by Prescott's credentials, and accuses him of being a spy for a rival oil company. Their confrontation is disrupted by the picking up of a lifeboat. Inside is a lovely young woman, Dwan (Jessica Lange), who was on her way to Hong Kong with a film producer when the boat blew up, leaving her the sole survivor.

After coming ashore in small landing crafts, the Petrox crew, Wilson, Prescott, Bagley and Dwan make their way over rugged mountains to a village resting at the base of a huge wall. After watching a native ritual — in which warriors chant "Kong...Kong...Kong" as a sacrificial girl is carried to a gate in the wall — Prescott is convinced a monster-sized primate lives on Skull Island. Wilson remains sceptical.

Whilst fishing from a rowboat, Dwan is captured by the natives who carry her through the Wall to Kong's sacrificial altar. From the jungle comes the sound of something crashing and as the natives go wild, Dwan looks up to see a 40-foot ape in front of her. As she swoons, Kong gently lifts her off the altar.

Wilson remains on the ship, leaving Prescott, Boan (Julius Harris) and Carnahan (Ed Lauter) to head the rescue party. Disaster strikes when an angry Kong shows up as the men are crossing a deep ravine. Prescott and Boan survive the ape's attack, and while Boan returns to the beach to inform Wilson of events, Prescott goes on alone.

Kong, by now smitten with Dwan, is expressing his deep love by crooning to her when a giant snake slithers up to them. In a death struggle, Kong kills the snake, but while distracted in combat, Prescott makes off with Dwan. The raging ape gives chase.

Back at the Wall, Wilson and his men have dug a pit filled with canisters of chloroform. Prescott and an exhausted Dwan just make it through the gate when it is bolted. Kong smashes down the gate and falls into the pit.

Knocked out and chained, Kong is put in the hull of a supertanker. Wilson tells Prescott and Dwan of his plan to introduce Kong to the public in New York. Both balk at the money-making scheme, defending Kong's right to remain in his natural habitat.

On deck, Dwan and Prescott embrace and her scarf floats down to the imprisoned ape. Kong goes wild with passion and is stopped from demolishing the boat only by Dwan's soothing words.

Prescott will have nothing to do with Kong's exploitation, but Dwan is contractually bound to appear in the circus at a New York park. Before thousands of spectators, Kong is brought in concealed under a huge Petrox gas pump.

Dwan, resplendent in a silver gown, is on the specially constructed altar when the pump is lifted, revealing Kong. Flash bulbs begin exploding and Kong, thinking Dwan is in danger, breaks his steel cage.

Amidst the turmoil, Prescott whisks Dwan to an elevated subway and Wilson is left weeping on the ground. Kong wrecks the train and follows them to a Manhattan bar, where Kong's hand scoops up Dwan.

Taking her to New York's tallest building, The World Trade Centre, Kong straddles the twin towers as army helicopters swarm over him. As long as Dwan is in Kong's hand, they will not fire but — in the classic tradition of beauty and the beast — Kong makes the ultimate sacrifice to save the woman he loves.

As hordes of reporters descend on Kong's body, his last sight is of Dwan standing near him in tears. Prescott walks away from Dwan, knowing that they could have stayed together only if Kong had lived. His death would only remind them of the cruelty and deceit that went into taking Kong from his jungle paradise.



The Cast

Dwan	Jessica Lange
Prescott	Jeff Bridges
Wilson	Charles Grodin
Captain Ross	John Randolph
Bagley	Rene Auberjonois
Carnahan	Ed Lauter
Timmons	Mario Gallo
Garcia	Jorge Moreno
Perko	Jack O'Halloran
Boan	Julius Harris

Technical Credits

Directed By	John Guillermin
Produced By	Dino De Laurentiis
Screenplay By	Lorenzo Semple, Jr.
Executive Producers	Federico De Laurentiis
	Christian Ferry
Director of Photography	Richard H. Kline, A.S.C.
In charge of Production	Jack Grossberg
Music Composed and Conducted By	John Barry
Film Editor	Ralph Winters, A.C.E.
Production Designed By	Mario Chiari
	Dale Hennesy
Production Manager	Terry Carr
Unit Production Manager (Hawaii)	Brian Frankish
Unit Production Manager (New York)	George Goodman
2nd Unit Director	William Kronick
Script Supervisor	Doris Grau
Camera Operator	Al Bettcher
Art Directors	David A. Constable
	Archie J. Bacon
	Robert Gundlach
Set Designers	Dianne Wager
	Carleton Reynolds
	William Cruz
Illustrators	Mentor Huebner
	David Negron
Miniature Designer	Aldo Puccini
Sound Mixer	Jack Solomon
Make-up Artist	Del Acevedo
Costume Designer	Moss Mabry
King Kong Technical Advisors	Rick Baker
	William Shephard
King Kong Creators:	
Designer	Carlo Rambaldi
Special Effects	Glen Robinson
Hair Design	Michaeldino
Make-Up	John Truwe
Molding	Don Chandler
Stunt Coordinator	Bill Couch
Supervisor of	
Photographic Effects	Frank Van Der Veer
Sound Effects Edited By	James J. Klingner

Photographed with PANAVISION Equipment ®
Color by Metrocolor ®

Running Time 134minutes approx. Length 12146ft. Certificate A

King Kong

NAT COHEN presents a DINO DE LAURENTIIS presentation
A JOHN GUILLERMIN Film

KING KONG_A

Starring
JEFF BRIDGES · CHARLES GRODIN
Introducing **JESSICA LANGE**

Executive Producers **FEDERICO DE LAURENTIIS**
and **CHRISTIAN FERRY**

Screenplay by **LORENZO SEMPLE JR.**

Produced by **DINO DE LAURENTIIS**

Directed by **JOHN GUILLERMIN**

Music Composed and Conducted by **JOHN BARRY**

In Charge of Production **JACK GROSSBERG**

Panavision®

Distributed by **EMI Film Distributors Limited**

